

Eye of the Beholder Quilt Design

original hand and machine applique patterns inspired by the world around us

info@eobquilt.com – (970) 330-6164

Mola Magic

Teacher: Margaret Brewster Willingham, *Eye of the Beholder Quilt Designs*

Beginner

March 3, 2024. 10 am – Noon and 1- 5 pm (CT)



Enjoy using your creativity while learning to make the time-honored Molas like the Panamanian Indians with Eye of the Beholder's easy 4-step method.

A Mola is a multi-layered reverse applique piece that is created by cutting down through the layers and hand stitching them to the layer below. Four patterns to choose from to start with, from simple to more complex, while still affording lots of room for your creativity to shine through. Whichever pattern you choose, you'll learn how to think through your personalized design to create it in 3 layers of fabric to stunning effect, choosing your colors, and creating your own added design motifs.

Our Mola project uses 3 layers of contrasting fabric; a top, middle and background layer, and a 4th fabric for applique circles. Though the stitching is done by hand, we will learn how to baste both by hand and machine for speed.

This Mola is made using Eye of the Beholder's ***Mola Magic with Block 10*** pattern.



Supply list:

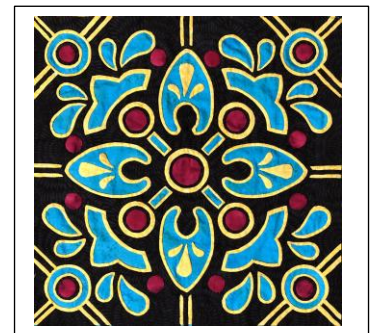
Required: Order items by February 9th, 2024. Pattern and kits available on www.eobquilt.com.

- ***Mola Magic with Block 10 Pattern*** with 4 mola design ideas. **Cost = print 18.75/ PDF \$14.00**
- ***Hand Accessory Kit 1 or 2*** (Each student needs to select one of these kits, useable for both classes.) **cost= \$29.08/ \$21.39 respectively.**
 - **Kit 1:** 1 – pack No 7 sharps (20) needles; 1 – pack No. 11 Milliner's (10) Needles; 1 – spool Neutral or White Basting thread; 1 - pair small, sharp 4" Kai bent-handled, slightly blunt-tipped scissors.
 - **Kit 2:** 1 – No 7 sharps needle; 1 – No. 11 Milliner's Needle; 1 – spool Neutral or White Basting thread; 1 - pair small, sharp 4" Kai bent-handled, slightly blunt-tipped scissors.

A word about fabrics: Batiks are required. Pre-washing is recommended.

Molas are brightly colored and typically have sharp contrast. You want a dark top fabric, and either a medium value middle fabric and a light value background fabric, OR a dark top fabric, and light value middle fabric and a medium value background fabric. You will need to be able to see through your background fabric to trace the design. The 4th fabric is applied on top of the dark top fabric and should be a coordinating accent fabric. For ex., Purple background batik, with a yellow middle fabric and a black top batik with a blue accent. Ex. 2, Yellow background, Red middle, a black top with green accent. Ex. 3, Turquoise background, yellow middle fabric, black top fabric and Hot pink accent. (There are optional fabric kits available.)

- 1 – 13 ½" x 13 ½" square, Black or dark batik, top layer.
- 1 – 13 ½" x 13 ½" square, Yellow or contrast batik, middle layer.



- 1 – 13 ½” x 13 ½” square, Purple or contrast batik, background/ bottom layer - need to see through to trace pattern
- 13 ½” x 13 ½” square, Blue or accent batik, applique circles.

1 Spool of 60, 80 wt. or silk thread for stitching (SAME COLORS as top, middle and accent batiks)

No 7 sharps needle- (included in required Virtual Hand Workshop Accessory Kit 1 or 2)

No. 11 Milliner’s Needle- (included in required Virtual Hand Workshop Accessory Kit 1 or 2)

Hand cotton quilting/ button thread for Basting (CONTRAST COLOR to top, middle and accent batiks) -(included in required Virtual Hand Workshop Accessory Kit 1 or 2)

1 pair Kai 4” bent-handled slightly blunt-tipped scissors (included in required Virtual Hand Workshop Accessory Kit 1 or 2)

5 – 8 safety pins for pin basting, and 5-8 straight pins

Light box (to trace design onto wrong side of background batik)

Marking implements: Mechanical pencil, white pencil &/or Frixion gel pen for tracing pattern onto wrong side of background batik; Clover blue washable marker, white marking pencil for marking designs; Fabric Eraser

Small ruler (2” x 4” or 4” x 4”)

Helpful items: Needle threader for small-eyed needle; Sewing machine with 90/14 needle, open-toed foot and 40 wt. thread in contrast color to top fabrics for optional machine basting.

Optional Kits:

Optional Mola Magic Fabric Kits: Assorted combinations. Cost = \$25.00.

Order by February 9th, 2024.

1 - Fat Quarter Black batik, top fabric

1 - Fat Quarter bright Yellow, middle layer (You can choose as the middle fabric or your background fabric)

1 - Fat Quarter purple, background layer (You can choose as the middle fabric or your background fabric)

1 - Fat Eighth accent color, applique elements*

*Kits vary by applique accent color: select blue, pink, red or orange.

Optional Mola Thread Kit: cost = \$35.00

4 - spools of matching Aurifil 80 wt. thread (Black, Yellow, Purple and either blue, pink, red or orange)

Preparation BEFORE class:

Cut each Batik fabric to:

- Black or dark top batik to 13 ½” x 13 ½” square.
- Yellow or contrast/middle batik to 13 ½” x 13 ½” square.
- Purple or contrast background/ bottom layer batik to 13 ½” x 13 ½” square.
- Accent applique circles batik to 13 ½” x 13 ½” square.



info@eobquiltedesign.com – (970) 330-6164

Be ready for success!

The items on the supply list are specific for a reason. They work. They are the tools I use every day in my work and will help you be successful. In a Virtual class there will not be a product table set up in the classroom for you to purchase items when / if you find your tools are not working. I would hate for you to be frustrated and discouraged because of the wrong tools. Please be sure to order everything you need from the website or your local shop so you are properly prepared. Having the right tools will make all the difference in the world for your pleasure and success. I want you to have the best possible experience in my class.

WHY THE TOOLS ARE IMPORTANT!

Batiks or top quality hand-dyes are the requested fabric for our projects, particularly for hand work. The reason is they have a high thread count (220). The high thread count produces a tight weave which will give you a nice “hole” when you baste with the No. 7 Sharps needle and 28 wt. basting thread (see below), and minimizes the fraying as you cut and hand stitch. Occasionally I’ve run into a “hard” batik, but not too often. Batiks and hand-dyes are also beautifully colored fabrics, rich in color and design, generally irrelevant which is the right side. I recommend pre-washing fabric before beginning your project. The experienced stitcher may choose silks and other beautiful, challenging fabrics to create with.

For Hand Work All items are available in the Notions section of our shop at www.eobquiltedesign.com

No. 7 Sharps Needles (20 needles): Our No. 7 Sharps are John James needles that we use for basting in our trace, baste, snip & stitch process for hand reverse applique. They are a thick needle that leave a big “hole” in the fabric because they separate the fibers of the fabric. We use this hole to see the sewing line as we remove the basting thread and replace it with the stitching line.

28 wt. Hand cotton quilting/ basting thread: When basting we want a thick thread to baste with as it helps to make and keep that hole begun by the no. 7 Sharps needle in our trace, baste, snip & stitch process for hand reverse applique. It’s important to see those holes so you can stitch your design accurately. You want a thread in a contrast color to your top fabric. We have natural, white and red in stock.

-No. 11 Milliner’s Needles: These are our preferred type of hand stitching needles for hand reverse applique. They are similar to, but stronger than a straw needle, so don’t easily bend. All the Milliner needles we sell are coated so they glide through batiks easily, and are honed well so they have no burrs on them. The coating also cuts down on hand/ wrist fatigue. Recommended Needles are John James Gold n’ Glide, John James Signature, and Colonial Needle brand. My preference has been the John James gold n’ glides, but when they were impossible to get during covid, we have discovered the John James Signature Needles and Colonial Needle Milliner’s.

Kai 4” bent-handled slightly blunt-tipped scissors: An Eye of the Beholder EXCLUSIVE. The bent-handled shape makes them the ideal scissor for trimming out your fabric to create your seam allowance- the blade and fabric can lay flat while the other hand cuts. Because the fabric is flat it minimizes boo-boos. The slightly blunted tip gives you enough tip to cut deep into your corners, yet the blunted tip glides along the fabric and doesn’t catch on the background fabric when you are between your top and background fabric which also minimizes boo-boos. These scissors open and close easily, cutting down on hand/ wrist fatigue, and the vanadium steel holds its edge. These are my go to scissors beyond reverse applique, too.

Hand Accessory Kits 2 convenient start-up kits for hand reverse applique

- **Hand Accessory Kit 1. Cost = \$29.08:** 1 – pack No. 7 Sharps needles for basting; 1 – pack No. 11 Milliner’s needle for hand reverse appliqué; 1 spool natural color 28 wt. cotton thread for basting; Kai 4” bent-handled, slightly blunt-tipped scissors for hand work.
- **Hand Accessory Kit 2. Cost = \$21.39:** 1 – No. 7 Sharps needles for basting; 1 – No. 11 Milliner’s needle for hand reverse appliqué; 1 spool natural color 28 wt. cotton thread for basting; Kai 4” bent-handled, slightly blunt-tipped scissors for hand work.

80 wt. Aurifil cotton thread for applique: This is my favorite thread for hand reverse applique and applique. I love it because it is super fine so it disappears in my fabric, yet it has fibers to grip the fabric as I sew. You want a thread in a matching color to your top fabric. We have an assortment of colors in stock.

Kai 4” straight blade slightly blunt-tipped scissors: An Eye of the Beholder EXCLUSIVE. I use these scissors to clip my points and curves after trimming out. The slightly blunted tip gives you enough tip to cut deep into your corners, yet the blunted tip doesn’t catch on the background fabric when you are between your top and background fabric which minimizes boo-boos. These scissors open and close easily

which cuts down on hand/ wrist fatigue, and the vanadium steel holds its edge. The straight shape helps to make my clips perpendicular to the basting line.

Desktop Needle Threader: I use and rely on this device to thread my No. 11 Milliner's needles. It keeps me sewing.

Beam N' Read Personal Light and USB/AC Adaptor (items sold separately): I use my Beam N' Read light every single day. The elastic neck strap adjusts for easy on/ off over my head and to situate the light once on. Flip up the hood and I have 6-LED lights shining on my project in the same direction as I'm looking at it without any shadows. It's lightweight, too, even with its 4-AA batteries powering it. Or I can save my batteries by plugging in with the USB/AC adaptor to an outlet or a USB port. Battery operated, it's great at the long arm, for when the power goes out or for reading in bed, too.

Frixion Gel Pens: in Black or Blue these make tracing the pattern onto the wrong side of my background fabric a breeze. I would never mark the front of my quilt with these pens as they weren't designed for fabric, but the wrong side of my background fabric will be hidden away inside my quilt when the piece is all done.

Magic Thread: Run your hand sewing threads through your pot of Magic thread before threading your needle and see how easily your thread glides through your fabric as you stitch. Magic Thread reduces static and moisturizes the thread so it tangles and knots less.

Other helpful products: All items are available in the Notions section of our shop at www.eobquiltdesign.com

Pin Pals: I use my Pin Pal to hold my Kai scissors. The Pin Pal stays in place by 2 magnets—one in front and one in the back. Of course you can also use it to keep your pins handy.

Perfect Piecing Foundation Sheets: These are fabulous for paper-piecing as they are the weight of a lightweight interfacing. You can run them through your printer to print your foundation patterns on them. You can easily see through them for positioning your pieces, and when you are all done you can leave them in your block for added stability.

Roxanne's basting glue: A must have product for holding the sashing strips in place when doing our quilt-as-you-go class. Also helpful for a fast method of doing bindings...temporarily glue first and then machine sew close to the seam. Heat sets it, and then it washes out.

Quilt-As-You-Go Handbook: Explains the steps of Pauline Rogers' Quilt-As-You-Go method with all her experiential tips. She gives ideas for quilting and goes beyond the basics of quilting as you go, covering other uses for the sashers for making bias, trim and bindings. Handbook includes pages for making your own personal notes.

Sasher Collection – large set and medium set: Make an assortment of sizes of sashings from 1/8" – 2 1/2" quickly for using in our Quilt-as-You-Go classes without burning your fingers. Large set has 10 different sasher sizes, and Medium set has 4 different sizes. Can also be used for making bias, bindings and trims.

